

Quotes

[View 5+ more](#)

A wealth of information creates a poverty of attention.

Everyone designs who devises courses of action aimed at changing existing situations into preferred ones.

[More images](#)

Herbert A. Simon



Herbert Alexander Simon, a Nobel Prize laureate, was an American political scientist, economist, sociologist, psychologist, and computer scientist whose research ranged across the fields of cognitive ...

[Wikipedia](#)

Born: June 15, 1916, Milwaukee, Wisconsin, United States

Died: February 9, 2001, Pittsburgh, Pennsylvania, United States

Bounded rationality is the idea that in decision-making, **rationality** of individuals is limited by the information they have, the cognitive limitations of their minds, and the finite amount of time they have to make a decision.

Bounded rationality - Wikiquote

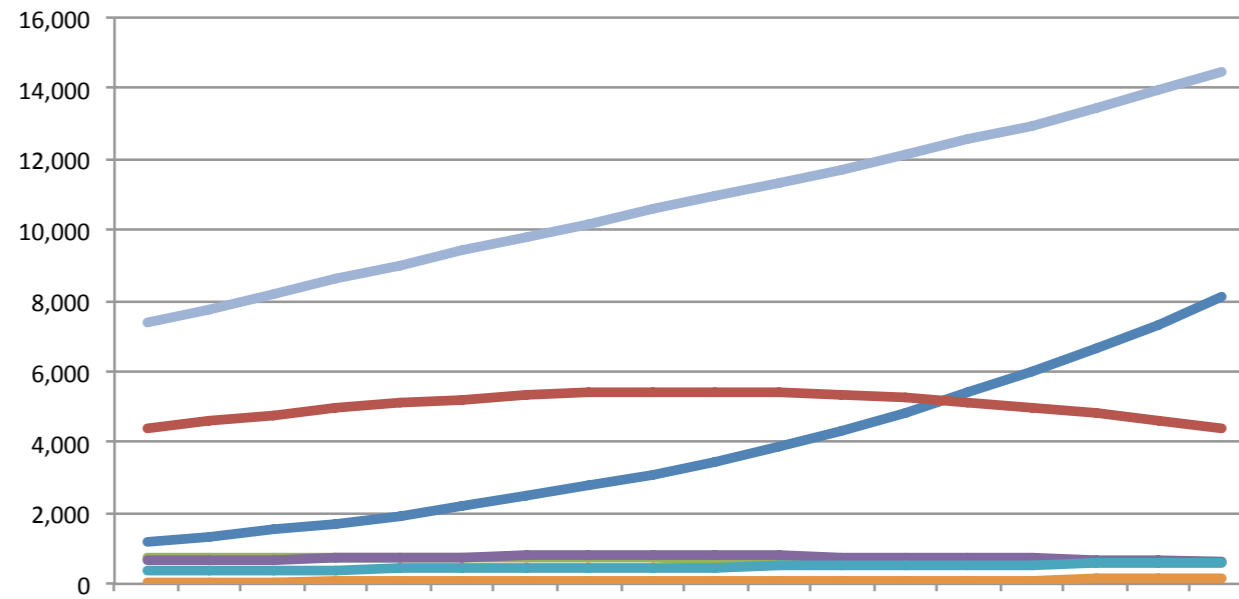
https://en.wikiquote.org/wiki/Bounded_rationality

Assignment

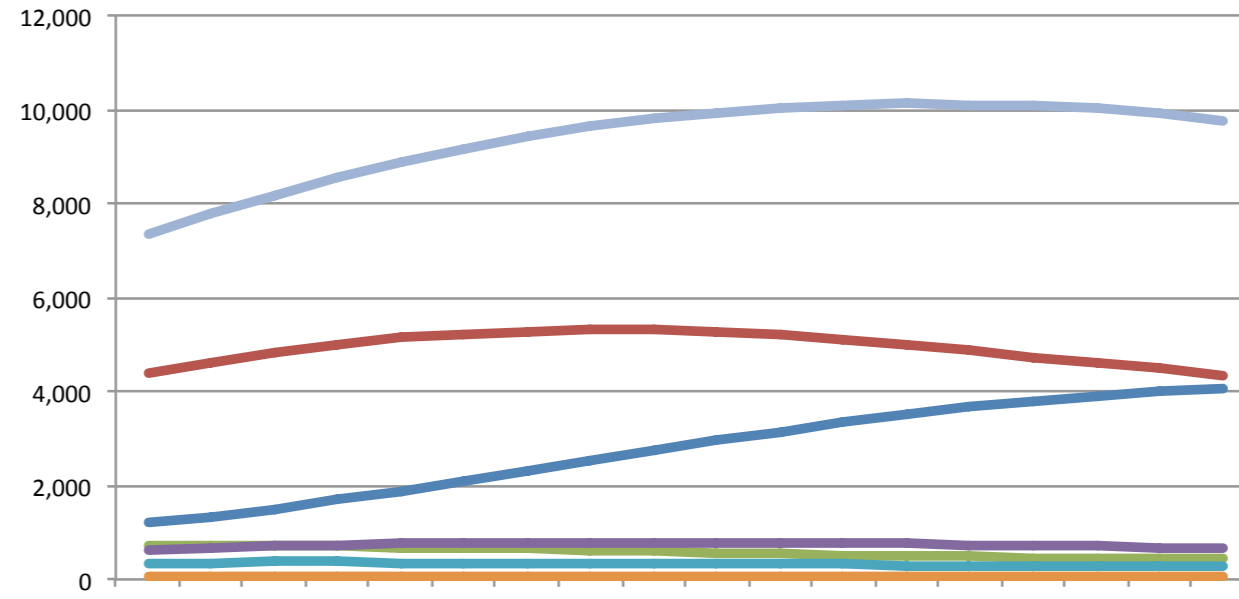
Model population growth on each continent and globally, using a very **simple** model (an extrapolation of growth trends), a more **complex** model (age cohorts, birth rates, death rates), and compare your results with the UN estimates (high, medium, low), which incorporate additional factors such as migration.

Millions of people

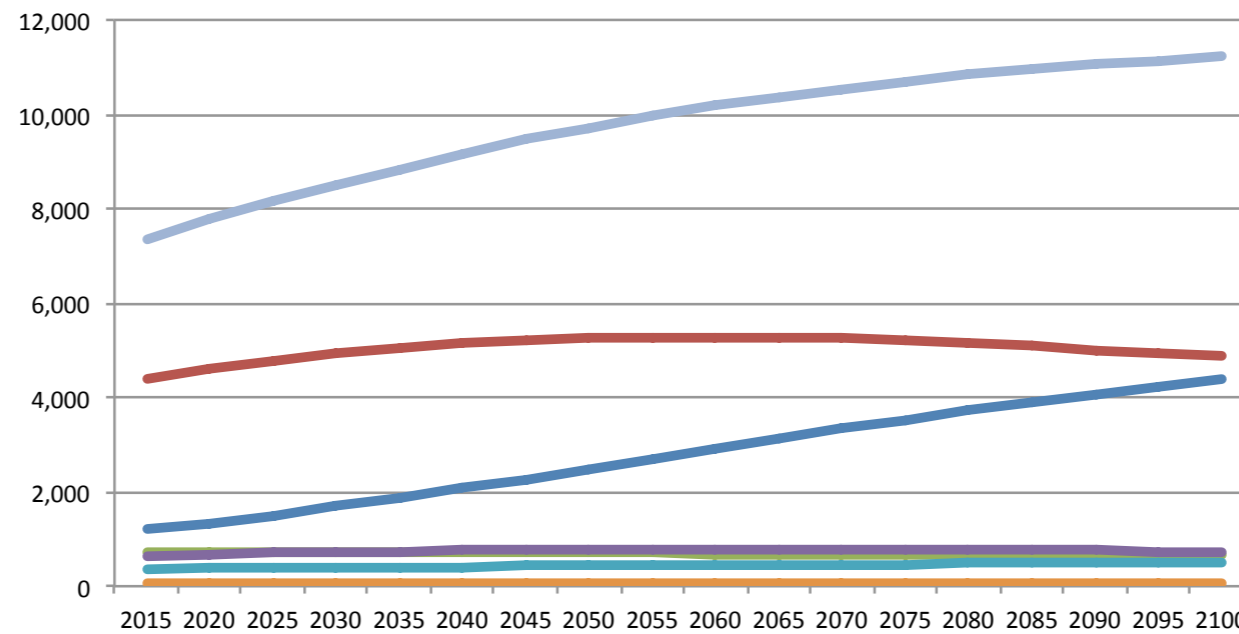
Simple



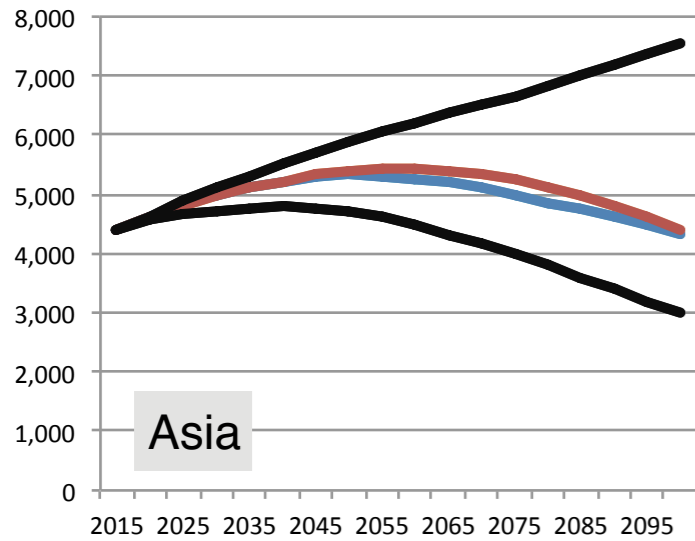
Complex



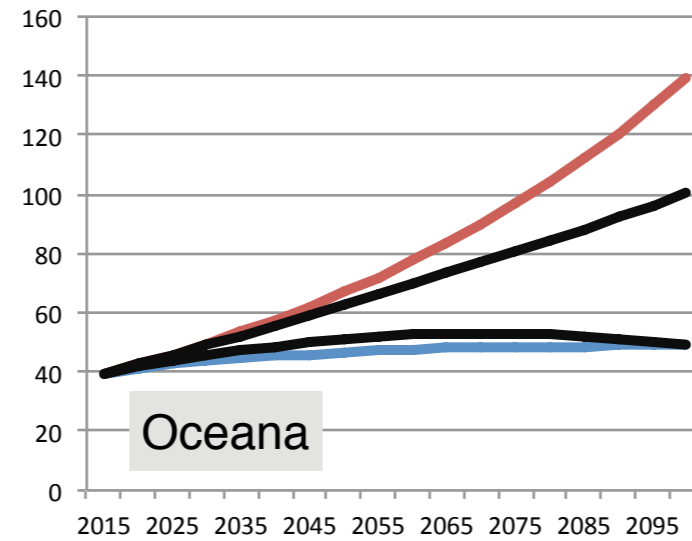
UN Medium



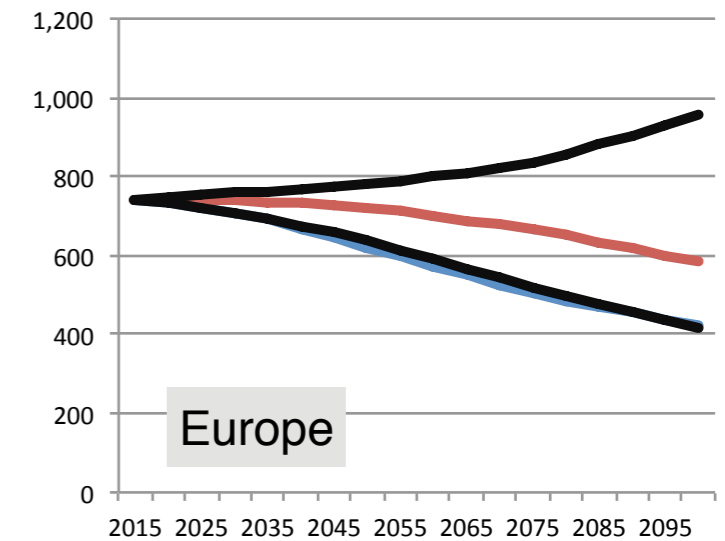
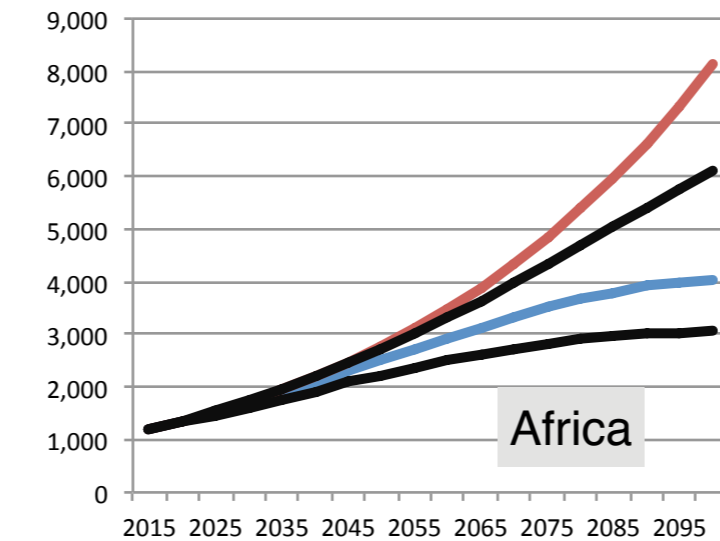
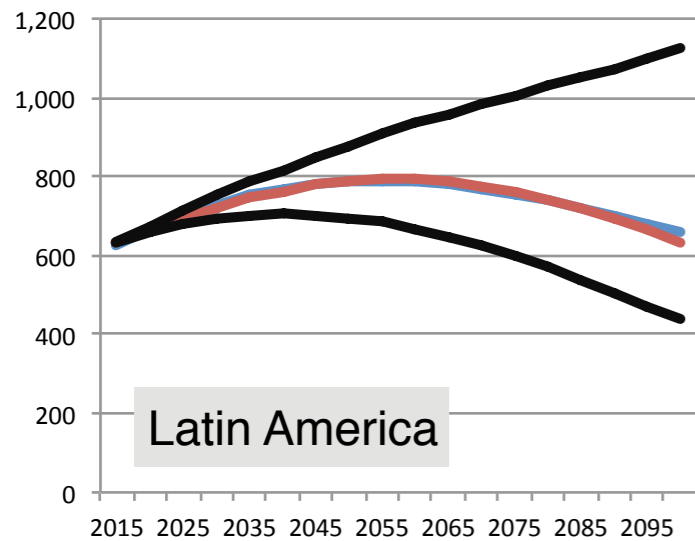
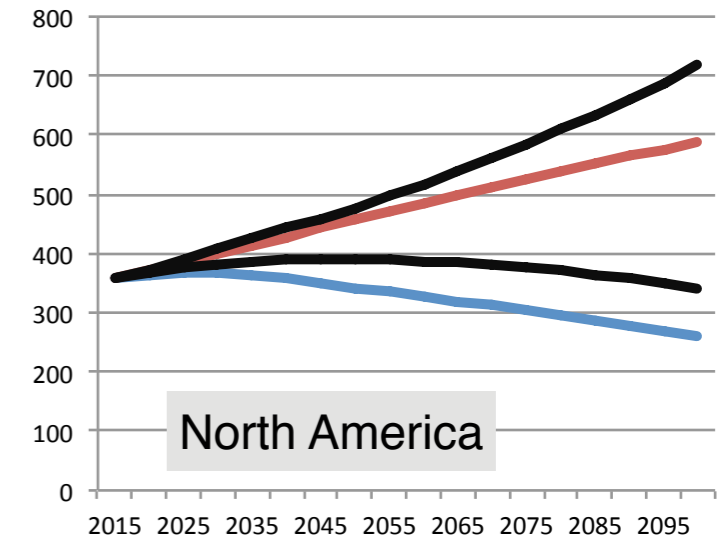
Our estimates are close together, and fall in the middle of the UN range



Our estimates diverge, and the simple one is higher than the UN range



Our estimates diverge, and the complex one is lower than the UN range



- Simple
- Complex
- UN range

Precision

Excel charts

Fancy software I don't have

If I don't have it, probably some of my students don't have it either!

← →

Spontaneity

Power point line drawings

Hand + pen

All my students have this!

